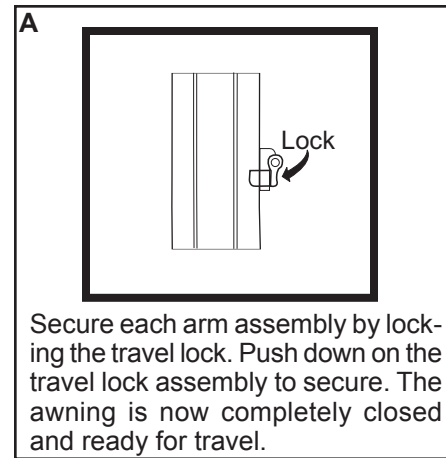


2. Lock Awning for Travel



CAUTION

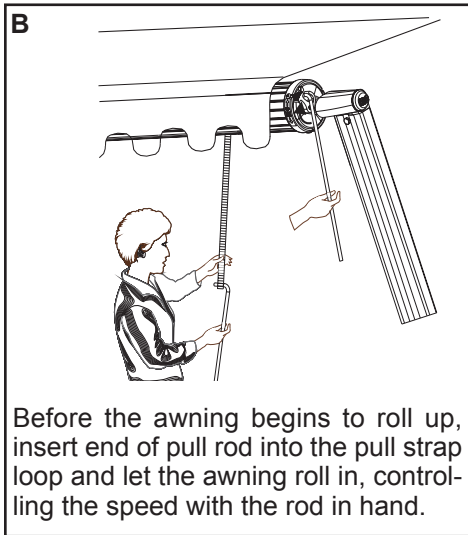
Have a firm grip on the pull strap before moving the Safe-T-Lock™ Lever to the "ROLL UP" position. Do not allow the awning to close uncontrolled. Damage to the awning and/or RV may occur.

A&E WeatherPro Helpful Hints:

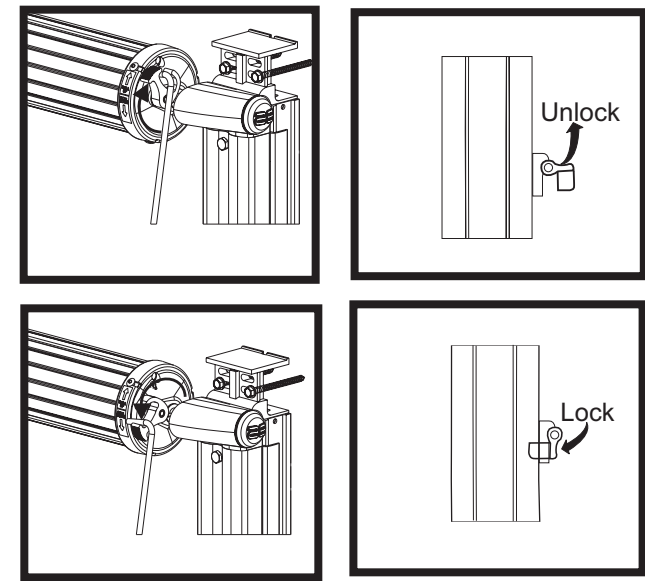
- Whenever the awning is wet while rolled up, as soon as conditions allow, roll it out and let it dry before rolling it up again. This will help prevent the formation of mildew and add greatly to the life of the awning.
- Mildew does not form on the fabric itself, but on the accumulated dust, dirt and grime. Periodically clean vinyl or woven acrylic fabric using a mixture of 1/4 cup of dish soap and 1/4 cup of bleach mixed with 5 gallons of warm water. Liberally slosh the mixture on the top of the fabric and roll the awning up for 5 minutes. This will apply the mixture to the bottom as well. Roll it back out and hose off with fresh water. Repeat if necessary. Allow to dry before rolling up.
- Always make sure the awning is fully extended before opening the entry door.

When To Get More Help:

This User's Guide is intended to provide practical instruction for the sequential operation of the A&E WeatherPro Patio Awning. If malfunctions occur that cannot be corrected by reviewing this Guide, contact a Dometic Service Center or a qualified service technician for assistance.

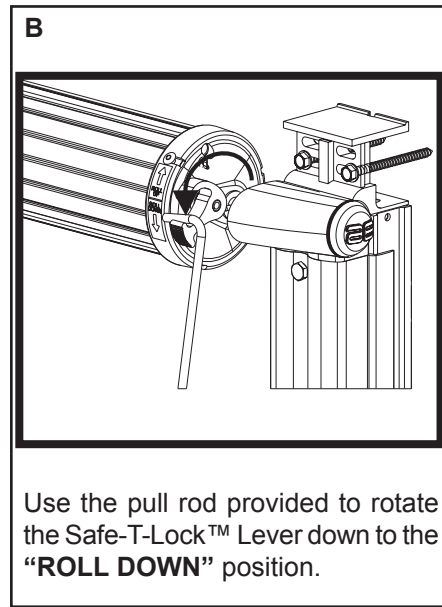
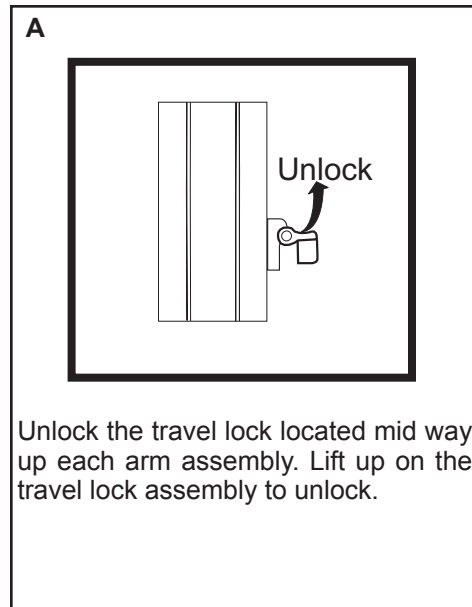


User's Guide

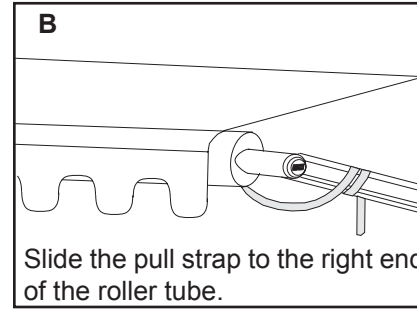
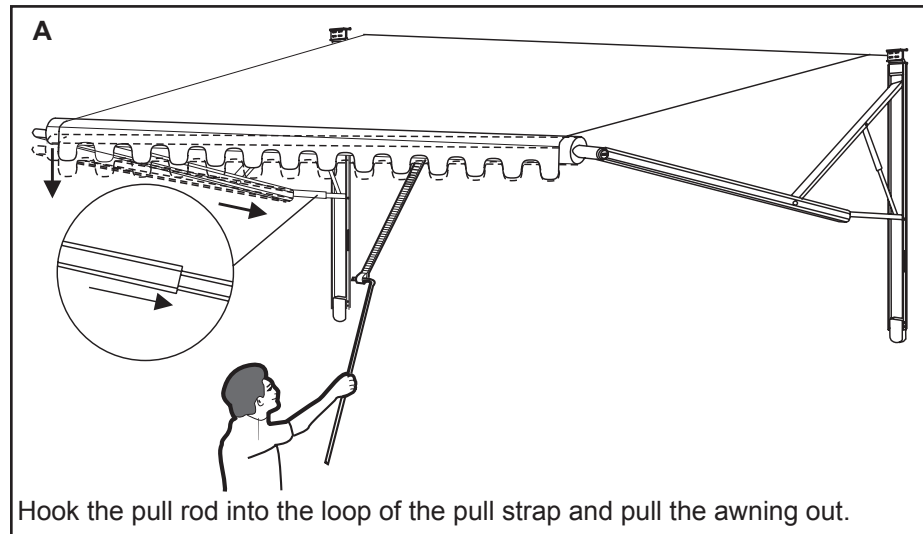


To Open Awning:

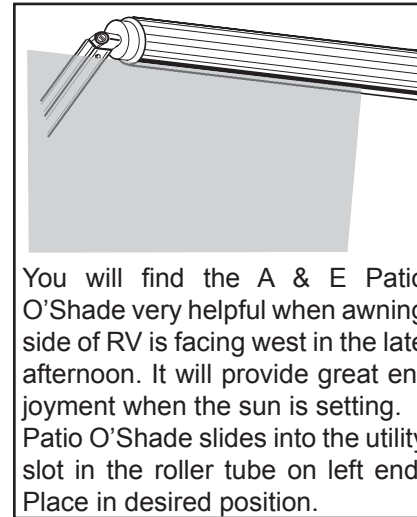
1. Unlock Awning



2. Extend Awning



Optional Patio O'Shade 93001(X).(X)(XX)



Rear Arm

Your A & E awning is designed to shed water if left out in the rain. The rear arm will automatically decrease the awning height approximately 9 inches when it is raining. When there is no longer the need to shed water it will return to the normal height. See FIG. 2A.

CAUTION

The A&E Two Step awning is extremely durable and can be operated during moderate rain and wind conditions. However, when periods of heavy rain and/or wind is expected the awning should be closed and in the locked position. Damage caused by wind and rain is not covered by warranty.

To Close Awning:

1. Return Awning to Travel Position

CAUTION

Pinch Point Hazard. When awning is closed, bottom arm assemblies will fold down and against back channel. To avoid personal injury and/or property damage, keep pinch points clear of objects and people.

