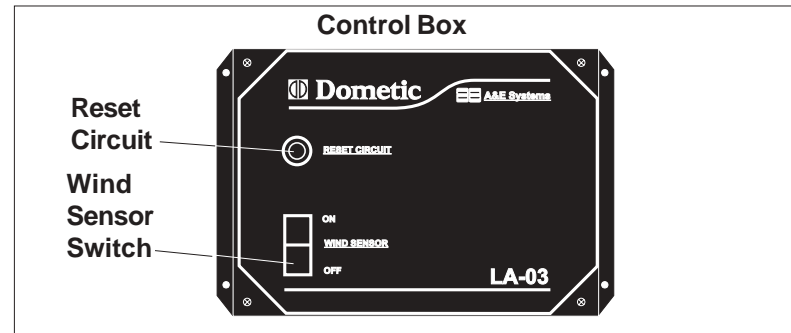


TO CLOSE AWNING:

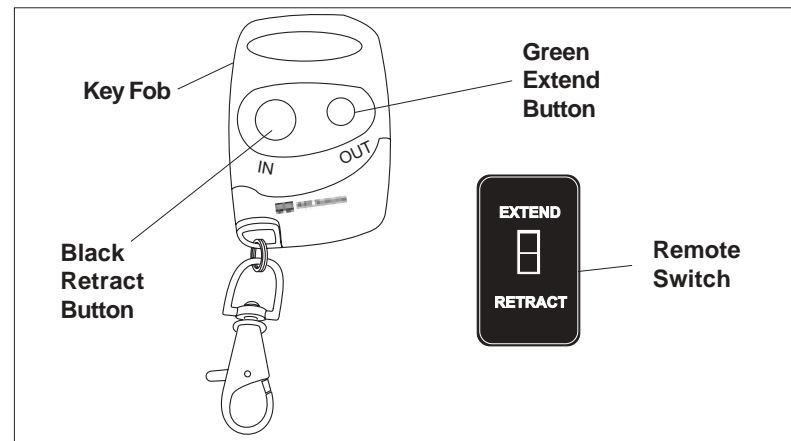
① Return Awning to Travel Position

Remove any accessories if installed. Press and hold the "RETRACT" black button on the key fob or the remote switch, after 3 seconds the awning will continue to retract without the need to keep the "RETRACT" button depressed. When awning is fully closed, the control box will automatically shut off the motor. If the "EXTEND" or "RETRACT" button is momentarily pressed during the automatic mode, the control will stop the movement.



Important: As an extra safety precaution, visually verify that the awning is fully closed.

A. If "RETRACT" black button is released before it has been held for the 3 second period, and the awning is partially closed, when released, the awning, it will remain in that position. The awning will continue to close when the black "RETRACT" button is pressed again.

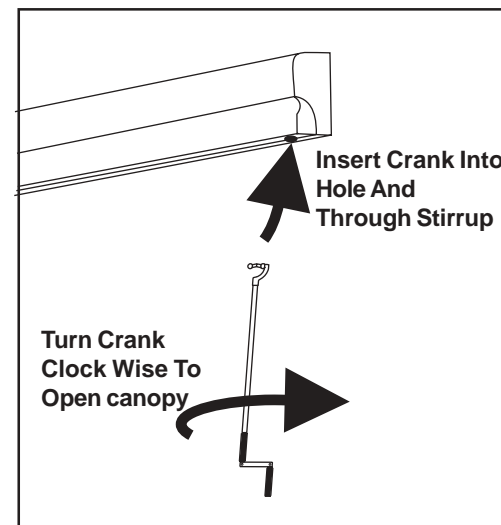


TO MANUALLY OPEN OR CLOSE AWNING:

Note: The awning is designed to be manually operated in emergencies or power outages by the use of a hand crank supplied with the awning.

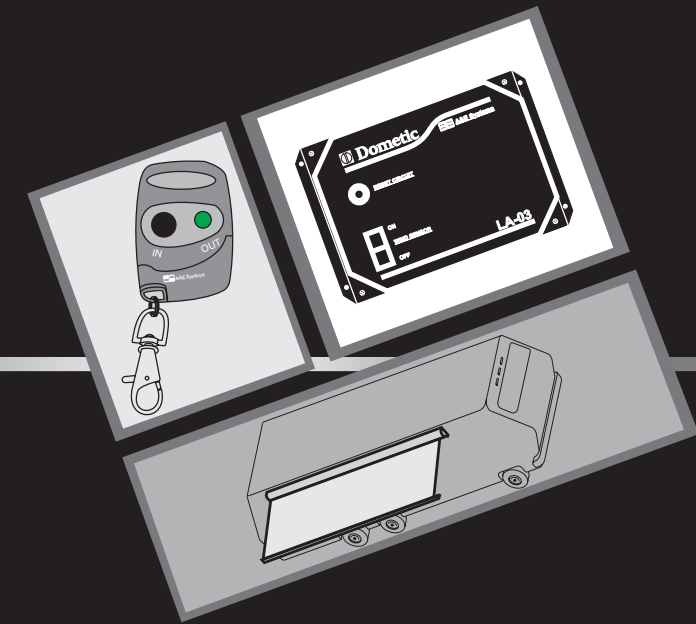
1. Insert hand crank in the hole on the right (motor) end of the awning and through the stirrup inside.
2. Turn crank in a clock wise movement to open awning. Reverse direction to close.
3. Extend awning until lateral arm has 1/4 to 3/8 inch space at the elbow joint. This will allow the arms to flex slightly in a moderate breeze.

IMPORTANT: Do not continue to crank open the awning once the lateral arms reach full extension. The canopy can be wound back on the roller tube in the wrong direction.



Dometic **A&E Systems**

*A&E Lateral Arm
Patio Awnings*



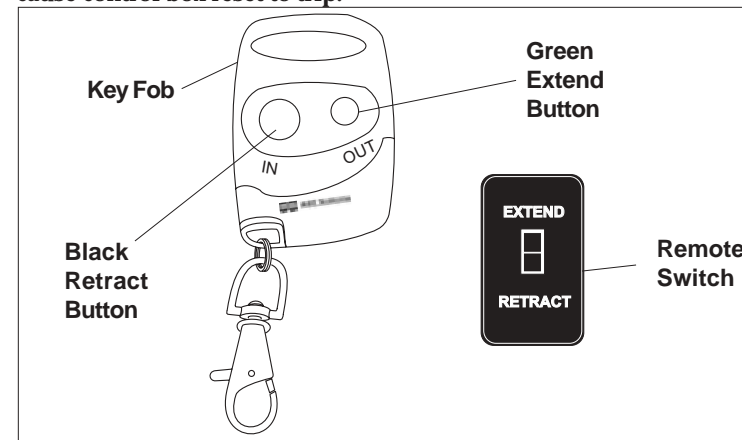
User's Guide

TO OPEN AWNING:

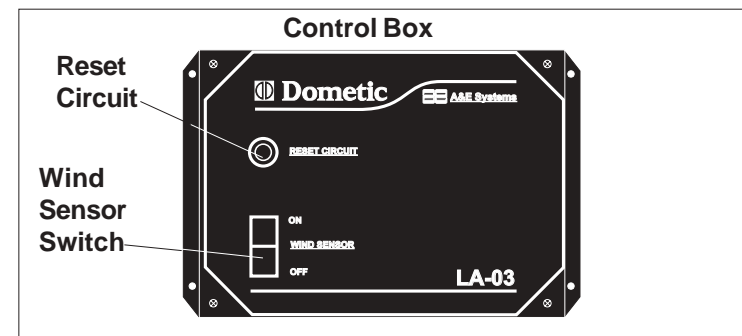
① Extend

Press and hold the “EXTEND” button on the key fob or the remote switch, after 3 seconds the awning will continue to extend without the need to keep the button depressed. If the “EXTEND” or “RETRACT” button is momentarily pressed during the automatic mode, the control will stop the movement. When awning is fully open, the control box will shut off the motor.

Important: Do not press the key fob and the remote switch “EXTEND” buttons at the same time. Awning will not work and/or may cause control box reset to trip.



Note: The control box system is protected with a 5 amp resettable fuse. If needed, reset the fuse by depressing the button on the face of the control box labeled “Reset Circuit”.



Important: When the power has been interrupted, wait approximately 15 seconds before depressing button again.

- A. The control box will automatically restore power when button is pressed again.
- B. If “EXTEND” button is released before it has been held for the 3 second period, the extension of the awning will stop. When the black “EXTEND” button is pressed again the awning will continue to open.

Important: When installed on a motorized RV, this system is wired to prevent accidental awning extension when vehicle ignition key is in the on position. When ignition key is turned on, the power going to the awning will be interrupted and it will not operate in the "Extend" mode. This however, will not prevent awning from being retracted.

WIND SENSING DEVICE

The A & E Lateral Arm awning is equipped with a wind sensing device that will automatically close the awning when wind conditions are present that may damage the awning. To activate the wind sensing feature turn the wind sensor switch to the “ON” position. The Wind sensor switch is located on the face of the control box.

CAUTION

When the wind sensor is set to “ON” position DO NOT hang items from the awning or tie the awning down. Damage to the awning and items may occur if the sensor is activated and the awning attempts to roll in.

The Lateral Arm Awning Control monitors the wind sensor switch position and wind speed events over the preset wind speed and stores it in memory.

CAUTION

When the wind sensor is set to the “OFF” position, and the wind speed exceeds the control preset level, damages may occur. Damage caused by wind is not covered by warranty.

If Awning will not operate and wind sensor switch is in the “ON” position, wind conditions may be above the preset wind speed which will not allow the awning to open. If wind sensor is “ON” and the sensor cable becomes unplugged with the awning in the out position, it will automatically close in 30 seconds.

The wind sensor is specifically designed to allow air to pass through the carousel. If the sensing element in the wind sensor becomes wet the awning will not open if closed; or will automatically close if open. Normally the only way for it to get wet is by driving in rain or spraying water directly into the carousel. However, it is possible for it to get wet from severe angled rains or water condensing on the wind sensor. If you suspect this has occurred wait ten minutes for it to dry out before operating awning.

Important: The wind sensor will only function correctly if the airway to the sensing element is clear. Keep airway clear of dust, insects, ice snow, or other debris. The sensing element can be cleaned with a mild soap solution and a small soft bristle brush.

Note: The awning control box contains an audible alarm. This alarm will sound if the wind sensor is exposed to temperatures below 30 degrees when the sensor switch is “ON”, or when the awning control has detected a problem either in the wind sensor or the wind sensor cable. If you hear a beeping sound coming from the control box when the sensor switch is in the

“ON” position one of the above situations has occurred:

- (1) the wind sensor feature is not functioning.
- (2) Temperature is below 30° F.

Solution:

Turn the sensor switch to the “OFF” position and wait until the ambient temperature is above 30 degrees F. and turn switch back to “ON”.

If alarm is still sounding contact a Dometic Service Center or a qualified service technician for assistance.

Note: Awning is not intended for cold weather operation. Awning will close at approximately 30 degrees F. with sensor turned to “ON”.

CAUTION

The A & E Lateral Arm awning is extremely durable and can be operated during moderate rain and wind conditions. However, when periods of heavy rain and/or wind is expected the awning should be closed. Damage caused by wind and rain is not covered by warranty.

IGNITION LOCK FEATURE

Whenever the vehicle ignition is on, a signal is sent to the awning controls to prevent the canopy from extending and AC power is available.

A&E HELPFUL HINTS:

- Whenever the awning is wet while rolled up, as soon as conditions allow, roll it out and let it dry before rolling it up again. This will help prevent the formation of mildew and extend the life of the awning.
- Mildew does not form on the fabric itself, but on the accumulated dust, dirt and grime. Periodically clean vinyl or woven acrylic fabric using a mixture of 1/4 cup of dish soap and 1/4 cup of bleach mixed with 5 gallons of warm water. Liberally slosh the mixture on the top of the fabric and roll the awning in for 5 minutes. This will apply the mixture to the bottom as well. Roll it back out and hose off with fresh water. Repeat if necessary. Allow to dry before rolling up.
Note: Operating the awning in and out more than two times in secession can cause the motor overload to open. Always make sure that the awning is fully extended or closed before opening the door.

WHEN TO GET MORE HELP

This User's Guide is intended to provide practical instructions for the sequential operation of the A&E Lateral Arm LA-03 Patio Awning. If malfunction occur that cannot be corrected by reviewing this Guide, they should be directed to a qualified Dometic service technician